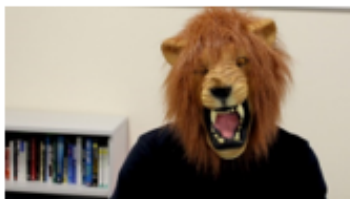
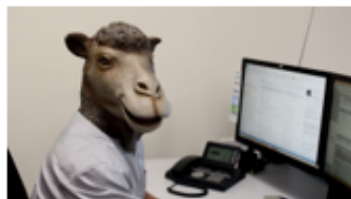


Make a Difference, by Dr Larry Little. What your results mean to you and to others?



Leading Lion
Task Driven Extrovert



Competent Camel
Task Driven Introvert



Much-Loved Monkey
People Focussed Extrovert



Tranquil Turtle
People Focussed Introvert

Summary of the characteristics of your personality type

Strengths	Sees the big picture Workaholic who is great at tasks Manages stress to advantage Takes control and makes decisions	Very detail oriented Loves process more than tasks Very logical Looks for perfection in everything	Great people skills. Knows if you are hurting Great compassion and empathy Knows when to party!	Has a few strong relationships Intensely loyal Worth listening to Fairly low maintenance
Weaknesses	Insensitive to others Say what they like Finishes the task at any cost Not afraid to take risks	Struggle to challenge directly Can't do casual small talk Unmanaged expectations Tendency to micromanage	Need to be appreciated Doesn't take rejection well Not naturally organised Not stressed by deadlines	Doesn't have many relationships Too laid back Decision making is slow Can't handle stress

How you see yourself and how others see you

Lion	A strong leader who gets the job done	Running through the details with limited interest in quality	Few people skills and with no regard for others	Rude, Arrogant and not very interested in relationships
Camel	Too worried about the small stuff with no view of the big picture	Dependable, logical, reliable and prepared	Boring, uptight, mean and just plain anal!	Too anxious and only concerned about process rather than people
Monkey	Weak, soft, too nice, too talkative and very needy	Loud, late, silly, distracted, unable to follow through and not detailed	Likeable, loveable and lots of fun	Too much energy, lack of focus and no boundaries
Turtle	Slow, weak, wishy-washy, unable to lead, no swift decisions	Not making logical decisions as too dependent on relationships	Disconnected, unapproachable, hard to reach and distant	Peacemaker with wise insight and calm decision-making ability